



Breakthrough T1D Walk Boston  
Saturday, September 28, 2024  
DCR Hatch Shell  
47 David G Mugar Way, Boston, MA 02108

## Important Day of Details

The funds and support raised by Breakthrough T1D Walk will power more research, enable more advocacy, and fund more support for everyone living with type 1 diabetes (T1D). Your dedication inspires us, and we know that, with your support, we will reach our goal of raising more than \$1 million at this year's Walk! We look forward to Walk Day where we can celebrate your commitment and the strength of the T1D community.

*Please read the following thoroughly before Walk Day to ensure an easy arrival at the DCR Hatch Shell. For questions or more information please contact the Greater New England Chapter at [bostonwalk@breakthrough1d.org](mailto:bostonwalk@breakthrough1d.org).*

## Before the Walk

- We HIGHLY encourage all Walkers to pre-register online at [walk.BreakthroughT1D.org/boston](http://walk.BreakthroughT1D.org/boston).
- Turning in funds earlier is another great way to ensure a speedy check-in process on Walk Day. Just like your local bank, the Breakthrough T1D Walk app has mobile deposit capabilities. Use this feature to get your donations added to your fundraising pages faster. Any offline donations that you do not wish to use the mobile deposit for, you can mail to: Breakthrough T1D Greater New England Chapter, Attn: Boston Walk, PO Box 5009 Hagerstown, MD 21741. Checks can be made payable to Breakthrough T1D. Please be sure to include a note listing the walker and team name—there is a collection form that can be used for this purpose which you can find in your participant center. We appreciate your patience, as there may be a delay in processing and posting offline funds.
- The Walk Day Bag Policy will be strongly enforced by police. No bags can be left at the DCR Hatch Shell while you are on the Walk route. Please be prepared by only bringing bags you can walk with (small backpacks, cross-body purses, fanny packs, etc.).
- Don't forget your reusable water bottle and Rufus!

## Walk Day Schedule

- **9 a.m.** Site Opens
- **10 a.m.** Welcome Remarks
- **10:15 a.m.** Walk Starts
- **11:30 a.m.** Light Refreshments Served and Entertainment

## When You Arrive

Teams and individual Walkers do not need to check in unless you have money to turn in or are a V1P. Please see the enclosed map to get acquainted with the site.

- **V1P Check-In:** If you have personally raised more than \$1,000, you are a V1P and there will be a designated check-in line just for you where you can pick up your V1P slap bracelet!
- **General Check-In:** If you have pre-registered online and have gifts to turn in, cash donations should be counted and sealed in a completed Walker Collection Envelope. Checks may also be turned in, please be sure that team name and participant are clearly written in the memo line.



Breakthrough T1D Walk Boston

Saturday, September 28, 2024

DCR Hatch Shell

47 David G Mugar Way, Boston, MA 02108

- **Milestone Moment:** All walkers with T1D should stop by the Welcome/Check-In Tent to pick up an “I Live with T1D” sign to hold up for the Milestone Moment during the opening ceremony.

## Food and Refreshments

- We are excited to welcome back [Travelmug Café coffee cart](#) onsite with coffee and other beverages available for purchase. Please note all V1Ps will receive one drink ticket at Check-In.
- The Breakthrough T1D Walk sites are cutting down on single-use plastic bottles. Refill stations will be located along the route and in the food tent, so please consider bringing your own reusable bottle.
- While we provide as many refreshments as possible, please understand that we have a limited quantity of food and beverage available, and we are not able to meet all dietary needs. In order for you to fully enjoy the activities of the day, we ask that you please come prepared with your own water bottles and snacks for low blood sugar treatment.

## Walk Route

Our Walk Route will follow the Boston side of the Charles River Esplanade and we will be offering a shorter Family-Friendly route option as well. Please see the enclosed route map for details and remember to follow the Breakthrough T1D signs. Volunteers will also be in place to help you navigate.

## Entertainment and Activities

- The Activities Tent will be up and running in the morning with face painting as well as bracelet and button making. Take a photo at our step and repeat and then post it on your favorite social media site using **#GNEWalks #Boston**. You can also visit the Floyd’s 99 Barbershop tent to get your hair sprayed blue!
  - Don’t forget to bring Rufus or your favorite stuffed animal to visit our Rufus clinic!
- If you would like to be considered for our t-shirt contest, please bring an extra t-shirt to Walk Day. We will be hanging all submissions and having live voting. The winner will be announced following the Walk and will be featured on next year’s Save the Date postcard.
- Visit our Resource Row to learn more about Breakthrough T1D, our research efforts, and how you can become involved locally. You can visit with our sponsors and community partners here as well.
  - Warrior Wraps for our T1D Walkers are available in this tent.
- Walk Day music will be provided by DJ Mikey V!
- As part of the opening ceremony, we will honor all T1D Champions by how many years they've been a T1D warrior and cheer them on. Please be sure to grab your “I Live with T1D” sign for this Milestone Moment.

## Walk Donation Tips

- Encourage your donors to visit your personal or team page to make a gift online.
- Don’t hold onto your Walk donations until Walk Day! Utilize the Breakthrough T1D Walk app to mobile deposit your donations!



Breakthrough T1D Walk Boston

Saturday, September 28, 2024

DCR Hatch Shell

47 David G Mugar Way, Boston, MA 02108

- Reminder: donations for the 2024 Walk (cash, check, online gifts) can be collected until December 31, 2024.

## Incentive Prizes and Awards

- If you raise \$250 or more, you will qualify for our fundraising rewards program featuring a variety of branded Breakthrough T1D items at each giving level. All qualified participants will receive a gift catalog following the Walk.
  - If you do not wish to receive a catalog, please log in to your Participant Center, click “edit profile” and opt out of the fundraising rewards program located under “event registration information”.
  - Please note: Any funds submitted within two weeks after Walk Day are included in qualifying totals for individual fundraising awards. Kindly note, team totals, general team donations, and unconfirmed gifts are not applied to the incentive program.

## Top 10 Team Tents

- Walk Team Tents will be awarded to the Top 10 Fundraising Teams. **The 10 teams who have raised the most funds as of Wednesday, September 25 at noon will be selected for this honor.** *Please note: Only gifts that are accounted for in your online Walk Participant Center will be included in your fundraising total.*
- Team Tents are to be used as a meeting or gathering place for Walk teams. They can be decorated, and you can serve food. **Please note that balloons are not allowed by order of DCR.**
- Team Tents will not be guarded while Walkers are on the route. No items are to be left at or inside Team Tents.

## Walk Day Policies

In order to promote a safe and fun event designed to raise funds for Breakthrough T1D and comply with the state’s requirements for our use of this public space, the Greater New England Chapter has developed the following policy.

Without specific approval of the Greater New England Chapter office, Breakthrough T1D Walkers and other attendees of the event cannot:

- Solicit additional funds for Walk Teams through the sale of items, such as bracelets, etc.
- Distribute information from a diabetes or other corporate vendor. No independent vendors or clubs can utilize Team Tents or Tables for soliciting purposes.
- Collect names, emails or mailing information from any Breakthrough T1D Walkers outside of collecting funds for the Walk.
- Drive on the DCR Hatch Shell circle during Walk Day.
- Make use of tents/tables that have not been designated as your team’s tent/table.



Breakthrough T1D Walk Boston  
Saturday, September 28, 2024  
DCR Hatch Shell  
47 David G Mugar Way, Boston, MA 02108

## Directions and Parking Information

There is no parking available at the DCR Hatch Shell. Should you choose to drive, please be prepared to park at one of the suggested nearby parking garages. We strongly encourage all Walkers to use public transportation on Walk Day. Uber or other ride sharing apps cannot enter the Hatch Shell but can pick up/drop off in the designated lane on Storrow Drive.

### By Train:

- Take the Red line to the Charles/MGH station: Walk over the footbridge to Storrow drive and proceed to the DCR Hatch Shell.
- Take the Green line to the Arlington station: Take a left onto Arlington Street, a left onto Beacon Street, turn right onto David E. Mugar Way, and cross over Storrow Drive using the Arthur Fiedler Footbridge.

### By Car:

- Boston Common Garage: Located underneath the Boston Common, the entrance is located on Charles Street directly across from the Public Garden. To walk to the DCR Hatch Shell from the garage, turn right onto Charles Street, turn left onto Beacon Street, turn right onto David E. Mugar Way, and cross over Storrow Drive using the Arthur Fiedler Footbridge. More information: <http://bostoncommongarage.com>.
- LAZ Storrow Drive Lot and Charles Street Lot: Head north on Charles Street toward Putnam Avenue. Turn left toward the Frances Appleton Pedestrian Bridge. Turn right to cross over the Longfellow Bridge onto the Frances Appleton Bridge. Follow along the Charles River Esplanade to the DCR Hatch Shell. More information: <https://www.lazparking.com/local/boston-ma/charles-street-garage>.

Thanks to your continued support, Breakthrough T1D is the most influential private funder of T1D research in the world and has invested more than \$2.5 billion in research funding since our inception. Breakthrough T1D currently has more than \$39 million designated to 28 local research projects in Massachusetts, New Hampshire, and Rhode Island. To learn more about the impact your efforts are making on T1D research, visit [BreakthroughT1D.org/research](https://BreakthroughT1D.org/research).

We cannot wait to see you on September 28! If you have any questions, please contact the Breakthrough T1D Greater New England Chapter at 781-431-0700 or [bostonwalk@breakthrough1d.org](mailto:bostonwalk@breakthrough1d.org).



# Breakthrough T1D Boston Walk

Saturday, September 28, 2024 | DCR Memorial Hatch Shell

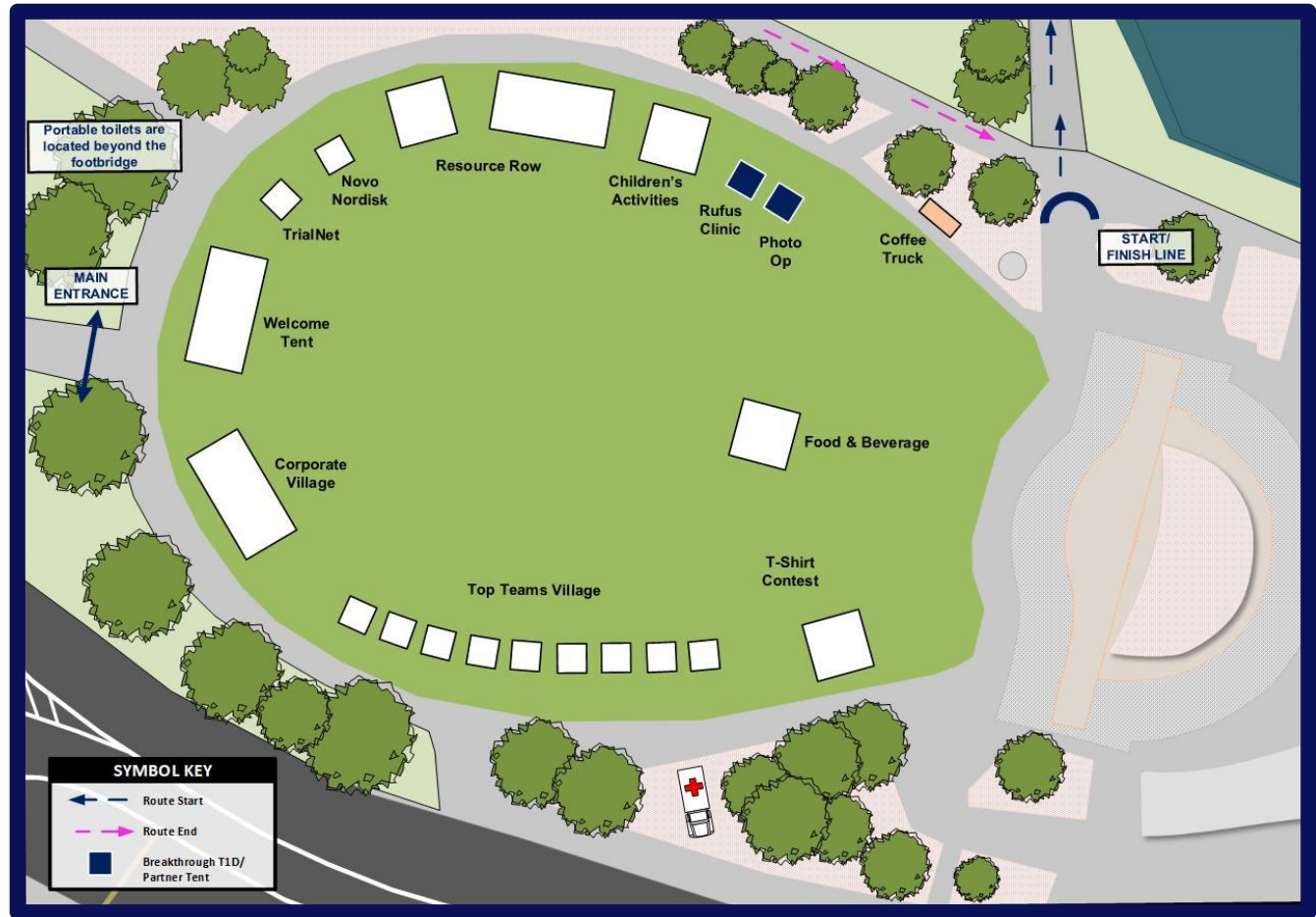
## Walk Day Schedule:

- 9 a.m.** Site Opens
- 10 a.m.** Opening Ceremony
- 10:15 a.m.** Walk Begins
- 11:30 a.m.** Light Refreshments/ Entertainment

National Series Sponsor:



Presenting Sponsor:



Breakthrough Sponsors:



National Partners:



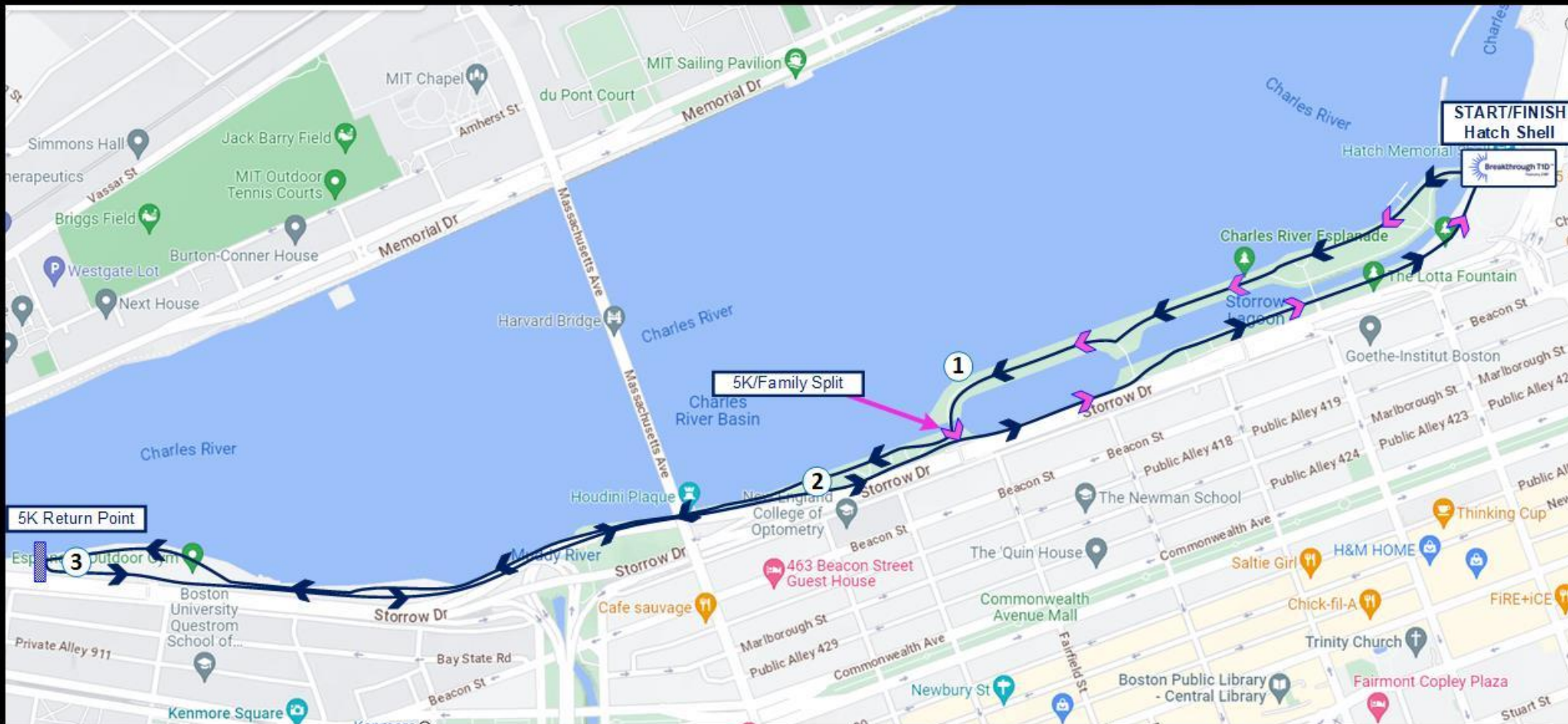
Vendors: Dexcom, Insulet, Reliable Diabetes Care, and Tandem

Special Thanks: Casella, Floyd's 99 Barbershop, It's Fair and Square, Lesser Evil Snacks, Kate's Bars, Munk Pack, Nature Nate's Honey Co., and Tougas Family Farm



# Breakthrough T1D Walk Boston | DCR Memorial Hatch Shell

47 David G Mugar Way, Boston, MA 02108



## Route Notes

- Route Opens: 10:15 a.m.
- Route Closes: 12 p.m.

## Route Key

-  5K Route
-  Family Route
-  Rest Stop
-  Route Return Point